

## Malaria vector species in Colombia - A review

James Montoya-Lerma<sup>1/+</sup>, Yezid A Solarte<sup>2,3</sup>, Gloria Isabel Giraldo-Calderón<sup>1</sup>,  
Martha L Quiñones<sup>4</sup>, Freddy Ruiz-López<sup>5</sup>, Richard C Wilkerson<sup>5</sup>, Ranulfo González<sup>1</sup>

<sup>1</sup>Biology Department <sup>2</sup>Instituto de Inmunología del Valle, Universidad del Valle, Cali, Colombia

<sup>3</sup>Consorcio para la Investigación Científica Cauceseco, Cali, Colombia

<sup>4</sup>Public Health Department, Facultad de Medicina, Universidad Nacional de Colombia, Bogotá, Colombia

<sup>5</sup>Division of Entomology, Walter Reed Army Institute of Research at the Smithsonian Institution, Museum Support Centre, Suitland, MD, USA

*Here we present a comprehensive review of the literature on the vectorial importance of the major Anopheles malaria vectors in Colombia. We provide basic information on the geographical distribution, altitudinal range, immature habitats, adult behaviour, feeding preferences and anthropophily, endophily and infectivity rates. We additionally review information on the life cycle, longevity and population fluctuation of Colombian Anopheles species. Emphasis was placed on the primary vectors that have been epidemiologically incriminated in malaria transmission: Anopheles darlingi, Anopheles albimanus and Anopheles nuneztovari. The role of a selection of local, regional or secondary vectors (e.g., Anopheles pseudopunctipennis and Anopheles neivai) is also discussed. We highlight the importance of combining biological, morphological and molecular data for the correct taxonomical determination of a given species, particularly for members of the species complexes. We likewise emphasise the importance of studying the bionomics of primary and secondary vectors along with an examination of the local conditions affecting the transmission of malaria. The presence and spread of the major vectors and the emergence of secondary species capable of transmitting human Plasmodia are of great interest. When selecting control measures, the anopheline diversity in the region must be considered. Variation in macroclimate conditions over a species' geographical range must be well understood and targeted to plan effective control measures based on the population dynamics of the local Anopheles species.*

Key words: *Anopheles* - Colombia - review

Recent reports on malaria reveal that in the Americas malarial morbidity decreased by 32%, from 1.1 million cases in 2000 to 775,000 cases in 2007 (WHO 2008, Sinka et al. 2010). Morbidity in Colombia specifically followed the same trend, but with less intensity. For 2000 and 2007, the morbidity figures were 144,432 and 128,462, respectively, with a decrease of 11%, contrasting with data from neighbouring countries with the exception of Venezuela (WHO 2010). Several factors have limited the effort to control human malaria in Colombia, including the lack of adequate knowledge of vector control activities and the misapplication of insecticide (usually due to inadequate frequency) as well as to the drug resistance of some *Plasmodium* populations to available treatments (Olano et al. 1997, Carmona-Fonseca 2003, 2004). These factors allow the malaria parasites to maintain its virulence and its importance as a human pathogen. Additionally, socio-economic, political and public safety conditions complicate the surveillance of patients and vectors (Beyrer et al. 2006). The situation has become more critical with the development of urban transmission in some regions (Méndez & Carrasquilla 1995,

Porras et al. 2001, Ochoa & Osorio 2006), the presence of new species (González et al. 2010, Ruiz et al. 2010) and the presence of species complexes (Brochero et al. 2010, Gutiérrez et al. 2010a).

The understanding of mosquito vector biology and ecology derived from field research and laboratory studies was directed towards understanding the bionomics of *Anopheles* vectors and was useful as a determinant for designing adequate measures to control malaria (Gabaldón 1983) and to set up a global strategic framework for integrated vector management (IVM) (WHO 2004). Although the use of pesticides facilitated the suppression of malaria in many areas and its control in others (Enserink 2002), it led to false expectations of their efficacy and resulted in their misuse and, in some cases, the development of pesticide resistance (Fonseca-González et al. 2010). At present, to fulfil the goals of the Global Malaria Action Plan (RBM 2008), the Colombian Social Protection Ministry has undertaken the challenge of defining and implementing a broad-based control strategy. The prospects for releasing refractive, transgenic malaria vector species are distant due to economical constraints and limited knowledge of the bionomics of the major vector species. Therefore, a sustained, integrated vector control strategy (Rojas et al. 2001, Snow et al. 2008) represents the most feasible and economical alternative.

Effective vector control has been limited by the insufficiency of information on the species of *Anopheles* mosquitoes that serve as malaria vectors; some of them are now recognised as species complexes, which include vector and non-vector species with different biologies, distributions and responses to control measures (Broche-

Financial support: NIAID/NIH for the establishment of an ICEMR/CLAIM (U19AI089702)

+ Corresponding author: james.montoya@correounivalle.edu.co

Received 1 April 2011

Accepted 7 July 2011

ro & Quiñones 2008). Additionally, uncertainties regarding the impact of anthropogenic environmental changes on the dynamics of malaria parasite transmission and the limited availability of effective tools for IVM have impacted the success of vector control. The goal of the Centro Latino Americano de Investigación en Malaria with respect to vector biology is to address the major gaps in our understanding of the ecology, behaviour, vector potential and control of *Anopheles* malaria vectors to guide the development and implementation of more effective IVM strategies in Colombia and Latin America.

Recently, Sinka et al. (2010) developed a series of predictive species range maps by compiling contemporary data on the occurrence of the dominant malaria vector species and the environmental and climatic variables relevant to anopheline ecology. Although it was tempting to use the same approach here, the absence of reliable databases for the dominant (*sensu* Sinka et al. 2010) Colombian vector species hindered the use of this approach. Therefore, for this review, we opted for the conservative designation of the primary and secondary vector species. We review and summarise the existing information regarding the bio-ecological characteristics of the major malaria vector species in Colombia. The geographical distributions, breeding habitats, feeding habits, host-seeking activities and resting patterns of the primary and secondary vectors are analysed and discussed.

*Characteristics of vectors* - According to Donnelly et al. (2002), an anopheline species is a primary vector if it possessed the following ecological and physiological characteristics: (i) wide geographic distribution, (ii) high, although frequently seasonal, local abundance, (iii) significant dispersion and colonisation capacities, (iv) adaptations for exploiting different man-made environments and commodities (e.g., buildings, cultivated areas and vehicles), (v) haematophagy, primarily of humans (anthropophilia) and (vi) susceptibility to the *Plasmodia* that affect humans. In addition, longevity was also a crucial criterion for transmission (Dalla Bona & Navarro-Silva 2010). Overall, the lifetime of a primary vector is longer than that of a secondary one, increasing its probability of becoming infected and infective. In addition, the transmission capacity of a vector has been shown to be affected by its immunity response level against the sporogonic cycle of *Plasmodium* (Arévalo-Herrera et al. 2011).

In the Americas, few species of *Anopheles* fulfil all the characteristics of a primary vector. The *Anopheles* (*Nyssorhynchus*) *darlingi* Root, 1926 stands out due to its marked anthropophilia and endophilia, followed by *Anopheles* (*Nyssorhynchus*) *nuneztovari* Gabaldón, 1940 and *Anopheles* (*Nyssorhynchus*) *albimanus* Wiedemann, 1920. However, using a novel approach (i.e., that of Sinka et al. 2010) that characterises the dominant vector species based on several bionomic aspects that are useful to direct control measures, it is plausible to include species such as *Anopheles* (*Anopheles*) *pseudopunctipennis* Theobald s.l., *Anopheles* (*Anopheles*) *quadrimaculatus* Say, *Anopheles* (*Anopheles*) *freeborni* Aitken, *Anopheles* (*Nyssorhynchus*) *aquasalis* Curry, *Anopheles* (*Nyssorhynchus*) *marajoara* Galvão & Damasceno and *Anopheles* (*Nyssorhynchus*) *albatarsis* Lynch-Arribálzaga s.l. as primary vectors.

*Primary malaria vector species* - Colombia has a high number mosquito species compared to neighbouring countries and is a potential hotspot for malaria endemicity (Foley et al. 2008). According to González and Carrejo (2007), five subgenera of *Anopheles*, with between 40-47 species, are found in Colombia (Table I). Of these, only three *Nyssorhynchus* species (*An. darlingi*, *An. albimanus* and *An. nuneztovari*) are primary vectors of malaria (Table II). However, in light of the criteria proposed by Sinka et al. (2010), species such as *An. (An.) pseudopunctipennis* and *Anopheles* (*Kerteszia*) *neivai* (Howard, Dyar & Knab, 1917) display ecological and epidemiological characteristics in Colombia (Table II) that concur with the definition of a primary rather than a secondary vector.

*An. (Nys.) darlingi* - This species, an inhabitant of jungle and forest environments, is mainly distributed in regions less than 500 m above sea level (masl) in areas with high relative humidity, precipitation of more than 1,000 mm and temperatures between 21-28°C (Rubio-Palis & Zimmerman 1997). Geographically, its population extends along the length and width of the Andes, from Argentina-Colombia, where it is also found to the west of this mountain range. It reappears in Panamá (Loaiza et al. 2009) and extends to the north in Honduras, El Salvador, Guatemala and Belize, reaching southern Mexico (Manguin et al. 1996, 1999). There is considerable biological variation from country to country (Quiñones & Suarez 1990, Manguin et al. 1999). For example, in northern Colombia, *An. (Nys.) darlingi* is found between the foothills and the coastal zone in areas with over 4,000 mm yearly precipitation (Suarez et al. 1990) (Fig. 1), while in Venezuela it is found in areas with lower precipitation (1,276 mm) in the south, near the border with Brazil and Guyana (Moreno et al. 2007). It is unable to survive in dry or arid areas (Sinka et al. 2010).

In Venezuela, the abundance peaks for *An. (Nys.) darlingi* populations and the transmission of malaria occurred after maximum precipitation (Magris et al. 2007). In contrast, transmission occurred during dry periods in Brazil (Camargo et al. 1996, Galardo et al. 2009). In Peru, their greatest abundance is associated with deforested sites and is related to the availability of breeding sites. Annual infectious bites increase in proportion to increases in deforestation and become reduced when there is maximum precipitation and when the temperature drops (Vittor et al. 2006).

Throughout its range, *An. (Nys.) darlingi* shows great morphological, chromosomal, isoenzymatic and genetic variability to the point that it may be considered part of a species complex (Manguin et al. 1995, Charlwood 1996). At least six major population groups are recognised (Pedro & Sallum 2009). However, recent analysis of the entire mitochondrial genome cytochrome c oxidase subunit I (COI) did not support a speciation process in *An. (Nys.) darlingi* (Moreno et al. 2010). For instance, in Colombia, microsatellite and COI analyses showed low and moderate genetic differentiation, respectively (Gutiérrez et al. 2010b), and supported panmictic populations (González et al. 2007) in this species.

TABLE I  
List of the *Anopheles* species in Colombia grouped in subgenus and by vectorial condition

Subgenus	Species
<i>Anopheles</i> Meigen	<i>An. (An.) pseudopunctipennis</i> Theobald <sup>b</sup> ( <i>An. pseudopunctipennis</i> s.l.), <i>An. (An.) punctimacula</i> Dyar & Knab <sup>b</sup> ( <i>An. punctimacula</i> s.l.), <i>An. (An.) apicimacula</i> Dyar & Knab, <i>An. (An.) bifoliata</i> Osorno-Mesa & Muñoz-Sarmiento, <i>An. (An.) eiseni</i> Coquillett, <i>An. (An.) forattinii</i> Wilkerson & Sallum, <i>An. (An.) mattogrossensis</i> Lutz & Neiva, <i>An. (An.) mediopunctatus</i> (Lutz), <i>An. (An.) neomaculipalpus</i> Curry, <i>An. (An.) peryassui</i> Dyar & Knab, <i>An. (An.) pseudomaculipes</i> (Peryassú), <i>An. (An.) vestitipennis</i> Dyar & Knab
<i>Kerteszia</i> Theobald	<i>An. (Ker.) lepidotus</i> Zavortink <sup>b</sup> , <i>An. (Ker.) neivai</i> Howard, Dyar & Knab <sup>b</sup> ( <i>An. neivai</i> s.l.), <i>An. (Ker.) bambusicolus</i> Komp, <i>An. (Ker.) boliviensis</i> Theobald, <i>An. (Ker.) cruzi</i> Dyar & Knab, <i>An. (Ker.) homunculus</i> Komp, <i>An. (Ker.) bellator</i>
<i>Nyssorhynchus</i> Blanchard	<i>An. (Nys.) darlingi</i> Root <sup>a</sup> , <i>An. (Nys.) albimanus</i> Wiedemann <sup>a</sup> , <i>An. (Nys.) nuneztovari</i> Gabaldón <sup>a</sup> , <i>An. (Nys.) benarrochi</i> Gabaldón, Cova-García & López ( <i>An. benarrochi</i> s.l. & <i>An. benarrochi</i> B), <i>An. (Nys.) oswaldoi</i> (Peryassú) <sup>b</sup> ( <i>An. oswaldoi</i> A, <i>An. oswaldoi</i> B), <i>An. (Nys.) rangeli</i> <sup>b</sup> , <i>An. (Nys.) aquasalis</i> Curry, <i>An. (Nys.) albitarsis</i> s. l. Lynch-Arribáizaga ( <i>An. albitarsis</i> F), <i>An. (Nys.) argyritarsis</i> Robineau-Desvoidy, <i>An. (Nys.) braziliensis</i> Chagas, <i>An. (Nys.) marajoara</i> Galvão & Damasceno, <i>An. (Nys.) parvus</i> (Chagas), <i>An. (Nys.) strodei</i> Root, <i>An. (Nys.) triannulatus</i> (Neiva & Pinto) ( <i>An. triannulatus</i> s.l.), <i>An. (Nys.) trinkae</i> Faran
<i>Lophopodomyia</i> Antunes	<i>An. (L.) gilesi</i> (Peryassú), <i>An. (L.) oiketorakras</i> Osorno-Mesa, <i>An. (L.) squamifemur</i> Antunes
<i>Stethomyia</i> Theobald	<i>An. (S.) kompi</i> Edwards, <i>An. (S.) nimbus</i> Theobald, <i>An. (S.) thomasi</i> Shannon

a: main vector; b: secondary vector; c: suspicious vector. Details regarding the main species in the text. Sources: Gast (1943), Olano et al. (2001), González and Carrejo (2009) Quiñones et al. (2006).

In natural environments, *An. (Nys.) darlingi* occupies diverse habitats but is almost always limited to small, unpolluted bodies of fresh water, such as streams, stream banks and lagoons located in shady areas containing floating aquatic plants (e.g., *Pistia stratiotes*) (Olano et al. 2001, Brochero et al. 2005, Rubio-Palis et al. 2005) or floating mats of wood pieces, dead leaves and flower and seed debris (Manguin et al. 1996). In disturbed areas, cisterns, ditches, gutters, artificial wells and aquaculture ponds are exploited as breeding sites, independent of whether these sites are partially or totally shaded, contain a substantial level of litter or are poor in vegetation and nutrients (Tadei et al. 1998), but requiring a pH of between 6.0-8.0. In the Peruvian Amazon, *An. (Nys.) darlingi* larvae were found in breeding sites located in pastures associated with shrub or secondary forest (Vittor et al. 2006). Although it shares its ecological niche with other anophelines, it is generally the predominant species where ever it is found (Rubio-Palis & Zimmerman 1997).

Although *An. (Nys.) darlingi* is associated with settlements near jungles and forest environments, it has been found in more semi-urban environments. This is the case in the peri-urban area of the city of Quibdó (Chocó, Colombia), a site of urban malaria infections, and *An. (Nys.) darlingi*, together with *An. (Nys.) nuneztovari*, is considered to be involved in malarial transmission (Ochoa & Osorio 2006).

Another important aspect regarding *An. (Nys.) darlingi* is the plasticity of its pattern of biting activity. This varies according to its geographical location. For example, in the Amazonian areas of Surinam, Colombia,

Venezuela, Peru and Brazil, biting typically reaches a single peak before midnight (Elliot 1972, Hudson 1984, Rozendaal 1989, Quiñones et al. 1992, Vittor et al. 2006, Magris et al. 2007). However, in other regions of Brazil (Charlwood & Wilkes 1979, Forattini 1987, Roberts et al. 1987, Lourenço-de-Oliveira et al. 1989, Tadei et al. 1998) and Colombia (Rodríguez et al. 2009), biting activity displayed a bimodal peak: one peak at the beginning of the night and other peak at dawn. In contrast, in French Guyana (Pajot et al. 1977) and in other places in Brazil (Freitas-Sibajev et al. 1995), biting activity reached three peaks (sunset, midnight and dawn).

The other essential issue to mention is the variable biting habits of *An. (Nys.) darlingi*. A classic study by Rachou (1958) (quoted by Zimmerman et al. 2006) demonstrated that the human blood index (HBI) for this species ranged between 0.120-0.853 in the state of Pará (Brazil). The HBI for Bolivian and Colombian *An. (Nys.) darlingi* was within this range (WHO 1960). Based on these observations, Linthicum (1988) hypothesised that one of the major characteristics of *An. (Nys.) darlingi* is its marked anthropophilia, an aspect verified by Oliveira-Ferreira et al. (1992) and Zimmerman (1992). However, in a comparative study, Zimmerman et al. (2006) found that anthropophilic habits might vary according to host availability and the site of capture. Indeed, they found that *An. (Nys.) darlingi* appeared to be highly anthropophilic, with variable rates between 0.131-0.405 when the captures were made from humans in three riverine Brazilian villages of state of Amapá (AP). Surprisingly, enzyme-linked immunosorbent assay (ELISA) analysis revealed a higher rate of bovine positive (56.9%)

TABLE II  
Biological characteristics of the main species of *Anopheles* of epidemiologic importance in the transmission of malaria in Colombia

Species	Host preference	Biting cycle	Taxonomic status	Natural infection	Vectorial status	References
<i>An. (Nys.) darlingi</i>	Humans	Bimodal	Homogeneous	<i>Plasmodium vivax</i> Puerto Libertador (Córdoba)	Primary	González et al. (2007), Rodríguez et al. (2009), Gutiérrez et al. (2010b)
<i>An. (Nys.) nuneztovari</i>	Humans	Bimodal	Complex of species	Tierralta and Montelibano (Córdoba), Tibú (Norte de Santander) <i>Plasmodium falciparum</i> Chocó, Putumayo, eastern plains	Primary	Fajardo et al. (1983), Fajardo and Alzate (1987), Olano et al. (1997), Posso et al. (2003), Brochero et al. (2006)
<i>An. (Nys.) albimanus</i>	Animals	Bimodal	Homogeneous	Nuquí (Chocó), Buenaventura (Valle)	Primary	Herrera et al. (1987), Quiñones et al. (1987), Solarte et al. (1996), Gutiérrez et al. (2008, 2009)
<i>An. (Nys.) rangeli</i>	Humans	Bimodal	Complex of species	Southern Colombia	Secondary	Quiñones et al. (2006), Zapata et al. (2007)
<i>An. (Nys.) oswaldoi</i>	Animals	NIA	Complex of species	Southern Colombia	Secondary	Quiñones et al. (2006)
<i>An. (An.) pseudopunctipennis</i>	Animals	NIA	Uncertain	Circumstantial observations	Secondary	Ocampo et al. (2000)
<i>An. (An.) punctimacula</i>	NIA	NIA	Complex of species?	NIA	Secondary	Olano et al. (2001), González et al. (2010)
<i>An. (An.) calderoni</i>	Humans	Unimodal	Complex of species	NIA	Secondary	Olano et al. (2001), Lucumi et al. (2009)
<i>An. (An.) neomaculipalpus</i>	Humans	NIA	-	NIA	Secondary	Gutiérrez et al. (2009) (as <i>An. lepidotus</i> )
<i>An. (Ker.) lepidotus</i>	Humans	Unimodal	Complex of species?	Circumstantial incrimination <sup>b</sup>	Secondary	
<i>An. (Ker.) neivai</i>	Humans <sup>a</sup>	Bimodal	Complex of species?	Charambirá (Chocó)	Secondary	Gutiérrez et al. (2008), Herrera et al. (1987), Astaiza et al. (1988), Carvajal et al. (1989)

a: YA Solarte, R González, J Montoya-Lerma, unpublished observations; b: ML Quiñones, unpublished observations; NIA: no information available.

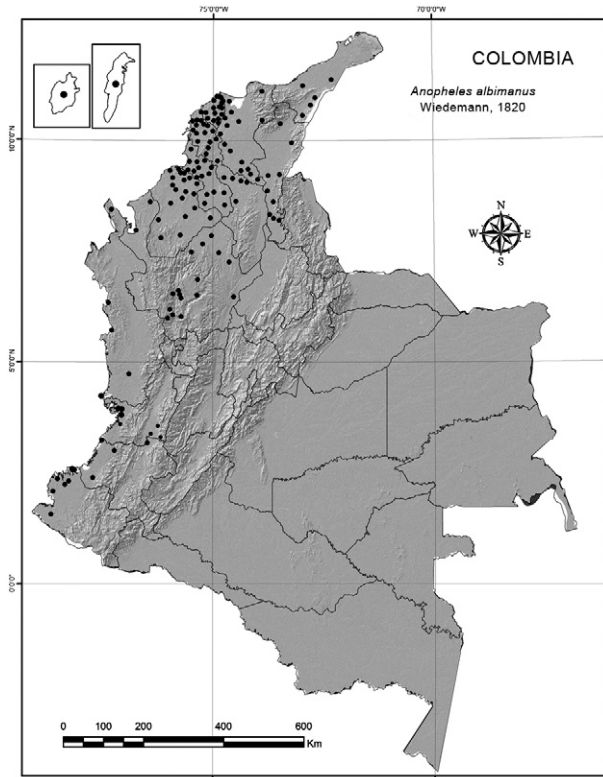


Fig. 1: distribution in Colombia of *Anopheles (Nyssorhynchus) albimanus*: Eastern Plains, the Amazon, Orinoquia, Uraba, Bajo Cauca and Magdalena Medio. It has been recorded at under 500 m in regions with high rainfall.

than human positive blood (11.7%). Oliveira-Ferreira et al. (1992) recorded this species as a mosquito capable of feeding on both humans and cattle.

*An. (Nys.) darlingi* has been implicated as a malaria vector in various South American localities (Mirabello et al. 2008). Its infection rates range between 0.5-2.5% (Oliveira-Ferreira et al. 1990, Tadei & Dutary-Thatcher 2000, Magris et al. 2007). In the Amazon Region, just as in the Venezuelan Orinoco, its abundance has correlated positively with malaria cases (Magris et al. 2007). Recently, in Peru, the vector was observed naturally infected with *Plasmodium vivax* and *Plasmodium falciparum* (Flores-Mendoza et al. 2004) and in Venezuela with *Plasmodium malariae* (Magris et al. 2007), whereas in AP it was found harbouring the three human species of malaria (Galardo et al. 2007). In Colombia, *An. (Nys.) darlingi* is the major vector of *P. falciparum* in the humid tropical forest of Chocó, in the western foothills of the Andes (Suarez et al. 1990, Rubio-Palis & Zimmerman 1997) and in the Eastern Plains (Brochero et al. 2005). In Puerto Leguizamo, state of Putumayo, it is present and considered to be the local vector of *P. falciparum* (Quiñones et al. 2006). More recently, in department of Córdoba, *An. (Nys.) darlingi* was observed to be naturally infected with *P. vivax* (Gutiérrez et al. 2009). *An. (Nys.) darlingi* is also a vector in Quibdó even though it has a low abundance (Ochoa & Osorio 2006).

In summary, *An. (Nys.) darlingi* is, without a doubt, the most efficient malaria vector in Colombia (Brochero et al. 2005, Quiñones et al. 2006), as it is in the rest of the Neotropics (Foote & Cook 1959, Manguin et al. 1999, Galardo et al. 2007), with exception of a region of the Brazilian Amazon, where its role as the primary vector may be replaced by *An. (Nys.) marajoara* as consequence of changes in land use (Conn et al. 2002). This efficiency is due to its high degree of anthropophilia, its diverse habits of endophilia and endophagy, its adaptability to domestic environments and its dispersal, in combination with its high degree of natural (1%) and experimental (23%) susceptibility to infection (Flores-Mendoza et al. 2004, Bharti et al. 2006) with human *Plasmodia* species.

*An. (Nys.) albimanus* - This is one of the most widely studied anophelines because it is one of the major vectors of human *Plasmodia* in Central America, northern South America and the Caribbean. In addition, it is the most well represented of *Nyssorhynchus* species in laboratory colonies. Frederickson (1993) provides an excellent review of its geographic distribution, ecological characteristics and epidemiological importance. This species has been found primarily in low coastal lands less than 400 masl and has a marked preference for areas below and up to 100 masl (Frederickson 1993), although it has been reported at higher elevations (Guatemala at 1,372 and 1,200 masl, Mexico at 1,941 masl and Colombia at 1,000 masl) (Vargas & Martínez-Palacios 1955, Frederickson 1993, González & Martínez 2006). It is found from Texas-Venezuela and on most of the Caribbean islands (Faran 1980). Its absence is notable in Trinidad and the Lesser Antilles (Rubio-Palis 2000) as well as in Brazil. On the Pacific coast, it is found from Mexico (Rubio-Palis & Zimmerman 1997) to northern Peru (Calderón et al. 1995). Its geographic distribution coincides with areas that have two rainy seasons with precipitation greater than 1,000 mm (although there is an exception in Guatemala) (Ogata et al. 1992), high relative humidity and a monthly variation in temperature of between 22-29°C (Ogata et al. 1992, Rubio-Palis & Zimmerman 1997, Loaiza et al. 2010).

At the national level, with few exceptions, this *Anopheles* species is predominant in localities along the Pacific coast (Olano et al. 2001) and, to a lesser degree, along the Caribbean coast, extending to the Isla Fuerte (Bejarano 2003) and the Archipelago of San Andrés (Olano et al. 2001). Its distribution (Fig. 2) and abundance seem to be determined by the availability of breeding sites. Along the Naya River (Valle del Cauca), it is primarily found along the coastline but completely disappears at 100-200 masl, likely due to the absence of breeding sites (Solarte et al. 1994). Nevertheless, it has colonised some areas with higher altitudes, such as those reported in Cauca (González & Martínez 2006) and Valle (R. González, unpublished observations), around 1,000 masl. In spite of the apparent plasticity of *An. (Nys.) albimanus* populations, they are cytologically and morphologically homogeneous (Keppler et al. 1973, Faran 1980, Frederickson 1993, Molina-Cruz et al. 2004) with genetic flow between populations. However, morphological variation in *An. (Nys.) albimanus* larvae has

been observed in Ecuador (R Wilkerson, unpublished observations). Recently, evidence from DNA analyses using nuclear and mitochondrial markers support a single species of *An. (Nys.) albimanus* throughout its geographical range (Loaiza et al. 2010) in Central and South America. However, in Colombia, two distinct lineages were observed in the Caribbean and Pacific regions using COI sequences (Gutiérrez et al. 2009).

*An. (Nys.) albimanus* breeding sites are generally exposed to the sun, but larvae can tolerate a certain degree of shade (Faran 1980, Frederickson 1993) and salinity (up to 37% sea water) (Frederickson 1993). The larval populations commonly increase with the rains and decrease during dry periods, during which they survive in mangroves, lagoons and coastal canals (Frederickson 1993). In Colombia, this species has been found in a great variety of aquatic (lakes, streams, wells) and semi-aquatic (gutters, animal and vehicle tracks, cavities in tree trunks, rocks or animals in mangroves) habitats (Marten et al. 1996).

Often, its presence has been directly associated with the presence of hydrophytes, such as *Pistia* sp., *Naias* sp., *Chara* sp. and *Utricularia* sp. (Torres-Estrada et al. 2005), and with *Dalbergia*, *Costus*, *Cyperus*, *Wedelia*, *Desmodium*, *Orizama*, *Abutilon*, *Calathea* and *Utricularia* (Solarte et al. 1994, Torres-Estrada et al. 2005). It has likewise been observed in urban areas (Olano et al. 1997) and areas disturbed by human activity. In various south-western Colombia localities, its primary breeding sites consisted of mining excavations, aquaculture pools and lagoons (Quiñones et al. 1987, Olano et al. 1997) as well as excavations left by brick pits (González & Martínez 2006).

In some areas along the Colombian Pacific coast, the anthropophilic activity of *An. (Nys.) albimanus* was variable, with at least two peaks: one towards midnight and a second one of less intensity before dawn in both intra and peri-domicile areas (Olah & Montoya 1985, Quiñones et al. 1987, Frederickson 1993, Solarte et al. 1996, Rubio-Palis 2000). Solarte et al. (1996) established that on the Naya River nearly 19% of mosquitoes entered houses to feed, a behaviour later confirmed by Olano et al. (1997) for the urban area of Buenaventura. In this area, the peak of greatest haematophagic activity is located outside of houses between 6:00-9:00 pm. Then, at midnight, there is a second peak inside of houses. Finally, between 05:00-06:00 am, this activity increased again in the peri-domicile areas (Olano et al. 1997). However, in Peru, the period of maximum activity was found to be between 8:00-10:00 pm (Calderón et al. 1995), extending to 11:00 pm in Mexico and Nicaragua (Frederickson 1993).

The adult abundance of *An. (Nys.) albimanus* was, with few exceptions, directly related to high precipitation (Frederickson 1993) and nearly disappeared during the dry season (Dieguez et al. 2002). However, in the urban areas of Buenaventura, where it is considered the most important vector, the increase in bite rate was related to the reduction in rainfall (Olano et al. 1997). There was a concurrent decrease in malaria cases simultaneous to a reduction in bite rate in Buenaventura. This finding is in contrast with the malaria outbreak in La Guajira (Porrás et al. 2001), where a direct relationship was found between a reduction in rainfall and an increase in

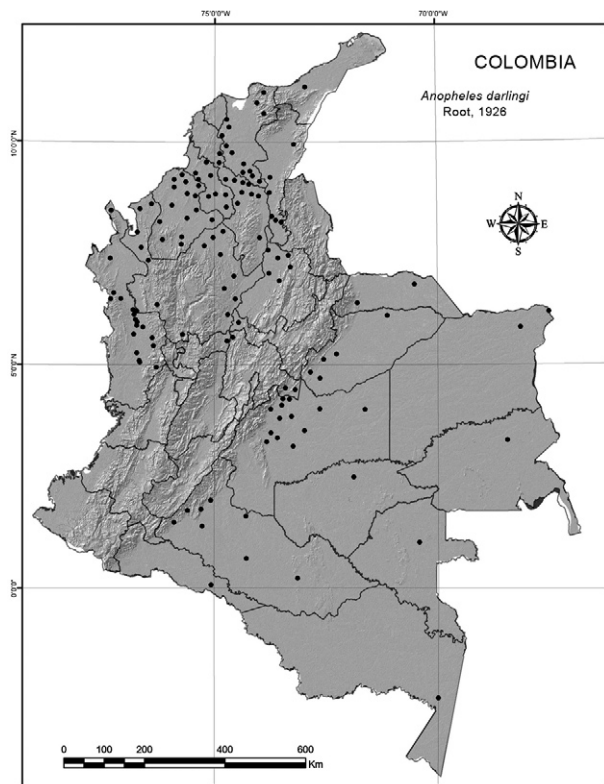


Fig. 2: distribution in Colombia of *Anopheles (Nyssorhynchus) darlingi*: Atlantic and Pacific coasts, specific records from Nariño, Cauca and Antioquia and on the Island of San Andres and Isla Fuerte, generally under 500 m.

cases of malaria. Recent studies have related the El Niño-Southern Oscillation Event, which affects global climatic conditions every two-seven years, to the increase in malaria cases transmitted by *An. (Nys.) albimanus* along the Colombian Pacific coast (Poveda et al. 2001).

Adults of *An. (Nys.) albimanus* have a short flight range and are endophagic and exophagic, the latter being the prevalent characteristic (Solarte et al. 1996, Olano et al. 1997). In El Salvador, mark, release and recapture studies demonstrated that adults travel 3 km in 6.5 days, although (Curry 1925) a greater dispersal range has been estimated in Panama (19 and 32 km), possibly aided by wind. Olano et al. (1997) established that in Buenaventura, this species exhibits low exophilia in corrals and stables in an area where the availability of cattle was scarce; instead it displayed anthropophilic habits. This finding contrasted with literature reporting that donkeys, horses, cows and dogs are highly preferred (Frederickson 1993). The biting activity of *An. (Nys.) albimanus* between 7:00-11:00 pm (primarily outdoors) is possibly of greatest epidemiological significance in the area because many people are outside and are exposed to the bites during this period interval. In field samples collected from Central American countries, the proportion of gravid females obtained varies between 37.8-70%. It is thought that gravid females, prone to transmit infection, are linked to this range (OPS 1996).

*An. (Nys.) albimanus* has been observed to be naturally infected with both *P. falciparum* (Herrera et al. 1987, Mekuria et al. 1991, Arredondo-Jiménez et al. 1995) and with *P. vivax* (Calderón et al. 1995, Gutiérrez et al. 2008), although its populations vary considerably with regards to their vectorial competence, biting habits and feeding preferences throughout the species' geographical range. It is the primary vector of malaria in southern Mexico (Arredondo-Jiménez et al. 1995) and in various countries of Central and South America (Faran 1980, Frederickson 1993, Rubio-Palis & Zimmerman 1997), including Colombia, where it is the principal vector in rural and peri-urban areas of the Pacific coast and, possibly, on the Caribbean coast (Gutiérrez et al. 2008).

*An. (Nys.) nuneztovari* - *An. (Nys.) nuneztovari* is widely distributed in eastern Panama and northern South America, primarily in the eastern foothills of the Andean Mountains, in the Amazon and in the grasslands of the Colombo-Venezuelan plains (Faran 1980, Rubio-Palis & Zimmerman 1997, Sierra et al. 2004) (Fig. 3).

In Colombia, it was found that aquaculture ponds are one of this species' most frequent breeding sites (López & González 1994). For example, in Cimitarra (Department of Santander), ponds represented approximately 81% of the breeding sites that, in addition to being permanent, were peri-domiciliary, completely exposed to the sun and contained emerging vegetation, particularly grasses (Brochero et al. 2006). López and González (1994) found that the phytoplankton and the water-vegetation interphase of aquaculture ponds were fundamental to the survival of the larvae of this species. It has also been observed that deforestation produced by monoculture favours the presence of these breeding sites (Brochero et al. 2006). Lagoons and rainwater pools are sites that harbour *An. (Nys.) nuneztovari* larvae in Quibdó and Buenaventura (Valle del Cauca) (Olano et al. 2001, Sierra et al. 2004, Ochoa & Osorio 2006).

*An. (Nys.) nuneztovari s.l.* exhibits variation in its behaviour patterns: in Suriname it is an exophilic species and bites human at sunset (Panday 1977); in Brazil, it is more zoophilic and exophagic, with a stronger association with sunset and peri-domicile habits than in Venezuela, where it exhibits marked anthropophilia, endophagia and endophilia (Gabaldón 1981, Olano et al. 1997, Brochero et al. 2006). In the Rio Ene Valley, a hyperendemic malarious region of Peru, it was found to be active from 11:00 pm-04:00 am, with a peak between 03:00-04:00 am (Hayes et al. 1987). In a pioneering study in northern Colombia, Fleming (1986) observed populations of this species that exhibited intra-domicile patterns with high anthropophilia and an activity peak late at night. In recent studies, Parra-Henao and Alarcón-Pineda (2008) recorded an exophagic behaviour in Córdoba, in contrast with Brochero et al. (2006) in Cimitarra, who observed an endophagic pattern. The different behaviour patterns determined for this species have been related to the three cytotypes. Type A [*Anopheles (Nyssorhynchus) goeldii* Rozeboom & Gabaldón], present in Brazil, is zoophilic and exophagic, while Types B and C, which are both found in Colombia and Venezuela, are predominately both anthropophilic and endophagic (Scarpassa & Ta-

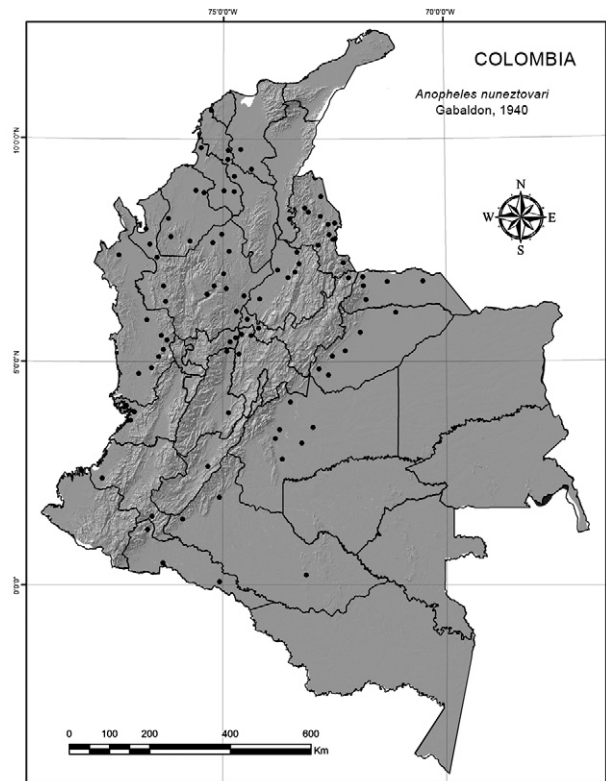


Fig. 3: distribution in Colombia of *Anopheles (Nyssorhynchus) nuneztovari*: Norte de Santander (Sarare and Catatumbo), Bajo Cauca-Nechi, Uraba, Magdalena Medio. It has been recorded at up to 900 m and in areas of high rainfall.

dei 2000). Endophagic-exophilic differences over the species' geographic range influence the use of residual insecticides to control malaria. In Venezuela, it was found that the adult abundance of *An. (Nys.) nuneztovari* increased two months after rainfall peaks and was additionally related to the rain accumulated during that period (Scorza et al. 1981). In Bajo Calima, Colombia, the adults displayed a similar bimodal pattern, with a high peak between June-July and secondary one between January-February (Fajardo et al. 1983).

*An. (Nys.) nuneztovari* has long been recognised as a major vector in Colombia, Peru and Venezuela (Elliott 1972, Hayes et al. 1987, Rubio-Palis et al. 1992). It has been observed to be naturally infected with *P. vivax* (Rubio-Palis et al. 1992) and *P. falciparum* (de Arruda et al. 1986). It is one of the species that transmits *Plasmodium* in Bajo Calima and Citronella (Buenaventura) (Rey & Rengifo 1950, Fajardo et al. 1983, Fajardo & Alzate 1987), areas where it is dominant both in adult and immature forms (Olano et al. 1997). It is likewise a vector in Tierralta (Córdoba) (Gutiérrez et al. 2009) and Tibú (Norte de Santander). Furthermore, due to its marked anthropophilia and endophilia, as well as its abundance and vectorial background in other places, it is suspected of being a vector together with *An. (An.) pseudopunctipennis s.l.* and *An. (Nys.) darlingi* in Cimitarra (Posso et al. 2003, Brochero et al. 2006).

Elliot (1972) proposed that these populations were allopatric after considering differences in host preferences and biting patterns among *An. (Nys.) nuneztovari* populations in Colombia and Venezuela compared to those in the Brazilian Amazonia. This proposal was confirmed by several morphological, chromosomal, molecular, behavioural and genetic flow studies (Fritz et al. 1994, Hribar 1994, Linley et al. 1996, Conn et al. 1998, Tadei et al. 1998, Scarpassa et al. 1999, Scarpassa & Tadei 2000). Most recently, it was estimated that *An. (Nys.) nuneztovari* represents a complex of at least five lineages (Mirabello & Conn 2008), as was suggested some years ago (Conn 1990, Conn et al. 1993, Sierra et al. 2004, Brochero et al. 2006).

Often, there is a misidentification of *An. (Nys.) nuneztovari*, *Anopheles (Nyssorhynchus) dunhami* and *An. (Nys.) goeldii* because of the absence of high-quality morphological keys. At present, the *An. (Nys.) nuneztovari* complex is comprised of the following: *An. (Nys.) goeldii*, *An. (Nys.) nuneztovari* A and *An. (Nys.) nuneztovari* C (Sierra et al. 2004). According to Sierra et al. (2004), *An. (Nys.) nuneztovari* populations located along the eastern margin of the Andean Mountains in Norte de Santander and the western margin in Chocó and Valle del Cauca correspond to a unique genetic species. This is despite differences in its karyotype that have been reported by Conn et al. (1993). Recently, Ruiz et al. (2010) reported the presence of the related species *An. (Nys.) dunhami* in the Amazon and Calado et al. (2008) were able to identify *An. (Nys.) goeldii* in AP based on similarity to *An. (Nys.) nuneztovari*. Both species were previously identified as *An. (Nys.) nuneztovari* using female morphology. In other Colombian regions, *An. (Nys.) nuneztovari* has been misidentified as several *Anopheles* species (Ramos et al. 2008), namely *Anopheles (Nyssorhynchus) oswaldoi* Peryassú *s.l.*, *An. (Nys.) nuneztovari*, *An. (Nys.) aquasalis*, *Anopheles (Nyssorhynchus) benarrochi* Gabaldón, Cova-García & López *s.l.*, *Anopheles (Nyssorhynchus) evasae*, *Anopheles (Nyssorhynchus) strodei* and *Anopheles (Nyssorhynchus) trinkae*. The bionomic variation in *An. (Nys.) nuneztovari* reported in South America requires clarification to establish the true distribution of the species.

*Secondary malaria vector species* - Seven other species of anophelines, *An. (An.) pseudopunctipennis*, *Anopheles (Anopheles) punctimacula* Dyar & Knab *s.l.*, *Anopheles (Anopheles) calderoni* (Wilkerson 1991) *Anopheles (Anopheles) neomaculipalpus* (Curry 1933), *Anopheles (Kerteszia) lepidotus* (Zavortink 1973), *An. (Ker.) neivai*, *Anopheles (Nyssorhynchus) rangeli* Gabaldón, Cova-García & López and *An. (Nys.) oswaldoi* (Carvajal et al. 1989, Quiñones et al. 2006) act as secondary vectors, are suspected of being associated with transmission or have been identified as having regional or local importance (Olano et al. 2001, Moreno et al. 2005, Quiñones et al. 2006, Gutiérrez et al. 2008). With the exception of *An. (Nys.) rangeli*, all of the above species are now recognised to be members of species complexes, making it difficult to associate previous information regarding their bionomic or vectorial status with a single species within each species complex. The

list of species (and vectors) is constantly being reconstructed and updated as the genus *Anopheles* has several sibling species complexes (Krzywinski & Besansky 2003), some of which are found in Colombia, e.g., *An. (Nys.) benarrochi* (Quiñones et al. 2001, Ruiz et al. 2005), *An. (Nys.) marajoara s.l.* (Brochero & Quiñones 2008) and *An. (Nys.) oswaldoi* (Ruiz et al. 2005).

*An. (An.) pseudopunctipennis* - Biochemical and molecular analyses and crosses established that this species is a complex composed of at least three "species": one from southern USA, Mexico and Guatemala, another from Central America, Belize and South America and the third from Grenada Island (Dantur et al. 2010). However, Manguin et al. (1995) argued that there is a single species with three widely distributed populations: one in the United States, Mexico, Guatemala, and Belize, another in Colombia, Ecuador, Peru, Chile and Argentina and, finally, a locality type present on Grenada Island. The neotype was described by Rueda et al. (2004). To fix the nomenclotypal name, a re-description was performed that modified both the type locality and the neotype.

*An. pseudopunctipennis* has been observed to occupy forest and anthropic environments and to prefer transition areas and regions close to jungles in Salta (Argentina) (Dantur et al. 2005). In Peru, it is highly anthropophilic in both the intra and peri-domicile environments, with activity peaking between 6:00-12:00 pm and 04:00-06:00 am (Calderón et al. 1995), while in Venezuela it is active both day and night and exhibited a facultative anthropophilic behaviour (Elliot 1972, Fleming 1986, Olano et al. 2001). In Venezuela, *An. (An.) pseudopunctipennis* prefers to bite animals instead of humans (Berti et al. 1998).

In Mexico, larvae of *An. (An.) pseudopunctipennis s.l.* are abundant along river banks during the dry season (Fernandez-Salas et al. 1994). In contrast, during the rainy season, it appears that the river carries them away and eliminates them (Savage et al. 1990, Rejmánková et al. 1991); a correlation was found between the number of larvae and the rainfall of the previous month. Larvae were positively associated with green (*Spirogyra*) and filamentous algae (Savage et al. 1990, Rejmánková et al. 1991) along river banks, specifically where there were very slow currents or in small pools resulting from river overflow (Berti et al. 1998).

*An. (An.) pseudopunctipennis s.l.* has been observed to be naturally infected with *P. vivax* (Hayes et al. 1987). Infection with *P. vivax* has been established by ELISA in the Valle del Bajo Chira, in the localities of Salitral and Querecotillo in Peru (Calderón et al. 1995), and with *P. falciparum* in Panama (Loaiza et al. 2008). Additionally, it is a suspected vector for *P. falciparum* in areas where the coast abruptly transforms into mountains as occurs in the western foothills of the Andean Mountains in Peru, in Chiapas, Mexico (Hoffman 1932) and in foothills of lesser altitude (< 1,000 m) from Colombia-Argentina (Rubio-Palis & Zimmerman 1997). In these areas at altitudes over 600 m, it is frequently the only vector present (Manguin et al. 1995). This is likewise the situation in areas near Cali (Valle del Cauca), where *An. (An.) pseudopunctipennis s.l.* has been incidentally associated with epidemic outbreaks (Ocampo et al. 2000).



*An. (An.) punctimacula s.l.* - This species has been considered to be a secondary vector in the coastal regions of Central America and northern Colombia (Rubio-Palis & Zimmerman 1997). Studies in Colombia and Ecuador have shown that most reported incidences of *An. (An.) punctimacula* were in fact *An. (An.) calderoni*, a member of the *An. (An.) punctimacula s.l.* group. *Anopheles (Anopheles) malefactor* Dyar & Knab (Wilkerson 1990) and *Anopheles (Anopheles) shannoni* Davis (Wilkerson et al. 1997, González et al. 2010) are the two other species in this group and they may be present in Colombia. The role of each of these species in malarial transmission is unknown. *An. (An.) calderoni* has been identified in several malarious eco-regions (coast, foothills and high valleys) of South America, including areas of Ecuador, Peru, Venezuela and Colombia (González et al. 2010). In Peru, it was found from coastal areas to 1,080 masl; in some instances, it competed in abundance with *An. (Nys.) albimanus* and *An. (An.) pseudopunctipennis*. *An. (An.) calderoni* has been incriminated as a secondary vector of *P. vivax* (Calderón et al. 1995).

*An. (An.) calderoni* is a valid species (González et al. 2010) independent from *An. (An.) punctimacula* and *An. (An.) malefactor* (Wilkerson 1991). It is likely that a large portion of the data for *An. (An.) punctimacula* from Colombia (Olano et al. 2001), Ecuador (Levi-Castillo 1949) and Peru actually corresponds to *An. (An.) calderoni*.

In Peru, the reproductive cycle of this species is associated with irrigation water channels and fish farms in crop culture in the Peruvian Amazon (Vittor et al. 2006). In Colombia, *An. (An.) calderoni* exhibits a nocturnal, anthropophilic behaviour. Both peri and extra-domiciliar catches produced a unimodal peak in the first hours of the night, although this peak was variable in other localities (7:00-8:00 pm and 10:00-11:00 pm) (Lucumí et al. 2009).

*An. (An.) neomaculipalpus* - This species is widely distributed from Mexico-Argentina (Knight & Stone 1977), but little is known about its bionomy and ecology due to its scarcity. In Venezuela, it has been reported to have a high anthropophilic index (50%) in areas where *An. nuneztovari* was the major vector (Rubio-Palis et al. 1994), and in Cimitarra it was recorded to be attracted to a Shannon trap in low density in the extra-domicile environment (Brochero et al. 2006).

*An. (An.) neomaculipalpus* from Venezuela was observed to be infected with *P. vivax* with a sporozoitic rate greater than those recorded for *An. (Nys.) marajoara* (0.84 vs. 0.82) or for *An. (Nys.) darlingi* (0.27), the major vector in the area (Moreno et al. 2005). In Colombia, it was observed to be naturally infected with *P. falciparum* (Herrera et al. 1987). Similarly, Gutiérrez et al. (2009) recorded two specimens positive for infection with *P. falciparum* in Turbo.

*An. (Ker.) lepidotus* - In Colombia, this species was confused with *Anopheles (Kerteszia) boliviensis* by Bates (1943), who recorded that, in the Department of Meta, it was a very common mosquito with morning and evening activity peaks and that it was limited to tree canopies. Bates (1943, 1944) found that this species had diverse biting habits, observing that it attacked humans during the day, but horses at night. Later findings revealed that

this species is very common in humid, pre-mountain forest areas in Tolima that are characterised by abundant epiphytes, including the bromeliad *Vriesea capituligera*, which serves as a breeding site (Quiñones et al. 1984). According to these authors, the species had daytime habits with population peaks between January-June and a maximum haematophagy and marked exophagy between 3:00-6:00 pm. Based on epidemiological evidence, the authors affirmed that *An. (Ker.) lepidotus* fulfils several of the requirements for consideration as an important vector in the transmission of *P. vivax* in Tolima. However, the species name has recently been called into question and it is the subject of on-going morphological and molecular studies (Escobar et al. 2010, Bruce Harrison, RC Wilkerson, unpublished observations).

*An. (Ker.) neivai* - This species is primarily found associated with epiphytic and terrestrial bromeliads: *Vriesea (Vriesea gladioliflora, Vriesea sanguinolenta)* and *Guzmania (Guzmania sanguinea, Guzmania sherzeriana var. sherzeriana and Guzmania musaica)* (Murillo et al. 1988a, Solarte et al. 1994), although it was additionally found in tree holes. In Panama, Trapido and Galindo (Zavortink 1973) observed this species to occupy arboreal areas of the rain forest and ground level in deciduous forests.

Two studies carried out on the Colombian Pacific coast demonstrated that it was abundant in disturbed forests predominantly populated by mangroves (*Rhizophora mangle, Avicenia nitida* and *Mora megistosperma*), where there was a characteristic increase in bromeliads (Astaiza et al. 1988, Solarte et al. 1994). Solarte et al. (1994) established its presence in transitional areas between mangroves and forests where *Euterpe cuatrecasana, Pterocarpus officinalis, Symphonia globulifera* and *M. megistosperma* predominated and where the greatest number of bromeliads (1.1-2.2 per m<sup>2</sup>) were found. It is interesting to note that 87% of the larvae were found within 0-5 m of the ground and the greatest larvae index was found within 0-2 m (Solarte et al. 1994). In these areas, which are characterised by the absence of stables or domestic animals, the species is typically active over the entire day (Solarte et al. 1996); however, at dusk the population becomes dispersed towards nearby towns where humans are present. Because of its marked exophilia and the lack of adequate resting and oviposition sites in the towns, most individuals later return to the mangroves, where breeding sites were abundant (Astaiza et al. 1988).

*An. (Ker.) neivai* was thought to be anthropophilic, but its feeding preferences have not been unequivocally demonstrated. Nevertheless, in Charambirá, Colombia *An. (Ker.) neivai* was found to be attracted to humans and biting activity peaks at twilight from 05:30-06:30 am and 6:00-7:00 pm. Additionally, there is a low level of intra-domicile activity that extends all night. In Charambirá, it was established that *An. (Ker.) neivai* activity began at 10 lux units (i.e., equivalent to 1 lumen/m<sup>2</sup>), achieved a maximum at around three units and ended when luminosity descended to 0.1 lux unit (Murillo et al. 1988b). The first peak was dominated by long-lived females, generally multiparous (i.e., more than 3 times), with a greater opportunity to transmit *Plasmodium*

(Astaiza et al. 1988). This observation was validated by Murillo et al. (1988b), who additionally analysed the age-range structure of this species based on the gonadotropic state of females captured in the field. These authors postulated that the females had a long life span based on the multiple gonadotropic cycle observed.

*An. (Ker.) neivai* did not present intra-domicile activity but exhibited an extra-domicile activity peak between 6:00-8:00 pm in other locations on the Colombian Pacific coast such as in Zacarias (a town near Buenaventura) (González et al. 1997) and marked daytime activity within forests near mangroves where its breeding sites predominate such as in the Naya River area (Solarte et al. 1996).

Several epidemiological field studies point to *An. (Ker.) neivai* as a potentially important vector of human malaria at various sites between Buenaventura-Chocó along the Colombian Pacific coast (Lee & Sanmartin 1967, Muñoz & Parra 1984, Olah & Montoya 1985, Hurtado & Solarte 1986, Astaiza et al. 1988). This possibility has been strengthened by the observation of mosquitoes naturally infected with both *P. vivax* and *P. falciparum* simultaneously (Herrera et al. 1987, Carvajal et al. 1989, Gutiérrez et al. 2008) as well as by the results of experimental infections with *Plasmodia* (Carvajal et al. 1989) and the results of sociological studies (Sevilla-Casas 1993).

*An. (Nys.) rangeli* - This species is distributed east of the Andes from Colombia to Bolivia, including Venezuela and Brazil (Hayes et al. 1987, Póvoa et al. 2001, Fritz et al. 2004, Brochero et al. 2005). In Colombia, larvae have been found in fish culture ponds, streams, *morichales* (mirity palms), lakes and brooks (Brochero et al. 2005). Biting activity occurred around houses from 6:00-7:00 pm (Brochero et al. 2005). Although it was found in Peru to be naturally infected with unspecified *Plasmodium* species (0.4%) (Hayes et al. 1987) and to be infected with *P. malariae* in Brazil (Póvoa et al. 2001), its vectorial status in Colombia has been questioned. While Brochero et al. (2005) did not consider it to be an important vector, Quiñones et al. (2006) observed this species to be naturally infected with *P. vivax* (8.7%) in southern Colombia and concluded that this species was involved in malaria transmission in this region. *An. rangeli* shows, in general, discriminant morphological characteristics in both its immature stages and in the adult female. However, in some cases, and particularly when this species is found sympatric with *An. nuneztovari*, their correct determination using only adult female morphology can be difficult. In the region of San Pedro de Urabá (Antioquia, Colombia) (Zapata et al. 2007), mosquitoes were identified from morphological characteristics as “possibly” *An. oswaldoi*, *An. rangeli* and *An. strodei*, but internal transcribed spacer-2 (ITS-2) restriction fragment length polymorphism patterns from type specimens confirmed that all were *An. nuneztovari*. Due to the high interspecific similarity between *An. rangeli* and *An. nuneztovari*, the use of a molecular tool is necessary for the correct taxonomic determination of these species.

*An. (Nys.) oswaldoi s.l.* - This is a well-recognised species complex (Marrelli et al. 1999). These authors reported four species from Brazil and Peru based on data from the ITS-2 sequences. In Colombia, *An. (Nys.)*

*oswaldoi* is a complex of at least two species (F Ruiz, unpublished observations). One of these, i.e., *An. (Nys.) oswaldoi B*, was observed to be naturally infected with *P. vivax* in southern Colombia, in the state of Putumayo, with an infection rate of 0.27% (Quiñones et al. 2006), and in Brazil with *P. falciparum* (infection rate 3.41%) (Branquinho et al. 1993).

*An. (Nys.) oswaldoi s.l.* has been recorded as a common species in the Colombian Amazon, where it is the major outdoor biting species, while *An. (Nys.) darlingi* was the major indoor biting species (Rodríguez et al. 2009).

*Concluding remarks* - In this summary, we have presented a review of the major biological characteristics of the three primary vector species of human malaria in Colombia and concluded that they should be considered of highest priority for epidemiologic surveillance. However, in addition to these three principal vector species, our review also seeks to direct attention to the monitoring of other anopheline species that, although neglected, fulfill many of the ecological and epidemiological parameters required for consideration as primary rather than secondary vectors. We concur with Sinka et al. (2010) that there is a need for further study of the bionomics of both primary and secondary vectors along with study of local conditions affecting the transmission of malaria. The research results must then be effectively incorporated into the new policies for malaria elimination (Moonen et al. 2009). Filling the gap between ecologically based and epidemiologically based information continues to be a necessity. Relatively simple bionomic observations that do not require the use of sophisticated technologies will help fill this gap.

Here, the geographical location of Colombia and the many ecological conditions favouring the diversity of anopheline species are described. From an epidemiological point of view, three species of the *Nysorhynchus* subgenus, *An. (Nys.) darlingi*, *An. (Nys.) nuneztovari* and *An. (Nys.) albimanus*, are considered to be primarily responsible for the transmission of *Plasmodia* to humans in the country. The remaining species may likewise present the characteristics of abundance, sporozoitic infection and biting habits sufficiently compatible with the ability to transmit the parasite to humans; however, uncertainties in their taxonomic categorisation and identification must be resolved before their role as vectors can be established in support of subsequent studies of their bionomy and their responses to control measure activities. Another consideration is that the number of species suspected of transmission could increase and the possibility of new primary vectors should be foreseen in the context of the transformation of the environment by various human activities. It is apparent that the impact of human intervention cannot be underestimated as we learn more about the complexity of malaria transmission.

It is clear that there are specific dynamics affecting each area and this should be kept in mind from an administrative point of view when considering whether sufficient, appropriate information is available for the design of measures to control the primary vector species. It is essential that the presence of complexes of sis-

ter species remain a key factor for consideration when planning for the possibility of resistance and re-occurrence. These factors may trigger a strong cycle in the use of residual insecticides (Brochero & Quiñones 2008). In fact, the most recent study on resistance conducted in Colombia, covering 12 departments with at least three localities in each, revealed that the two major species already present a certain degree of resistance to some of the insecticides used in public health programs ([ins.gov.co/?idcategoria=8508#](http://ins.gov.co/?idcategoria=8508#)).

Furthermore, due to several socio-economic factors (extension of the agricultural frontier, massive displacement, armed encounters, troop movements etc.), a great portion of the nation's territory is now moving towards a scenario with variable epidemiologic conditions that favour the re-emergence of malaria and other illnesses transmitted by vectors. In addition to these social phenomena, we must add the environmental ones that allow species of other subgenera (e.g., *Anopheles*, *Kerteszia*) to begin to acquire importance as regional or local vectors, e.g., *An. (An.) pseudopunctipennis*, *An. (Ker.) neivai s.l.*, *An. (Nys.) marajoara*. These species exhibit adaptability and will therefore adapt to the disturbances to their habitats (e.g., wooded areas) and/or can become domesticated in urban areas. It would be interesting to study these dynamics (especially those of species replacement) over time and in light of the changes that are occurring in the different biogeographic zones, with the understanding that, as Brochero and Quiñones (2008) expressed: "...species are complex, dynamic organisms in permanent adaptation...".

For these reasons, those in charge of public health must pay more attention to the specific interactions occurring between the various participants in the transmission cycle (parasites, vector and host). These interactions should be reviewed from an ecological and evolutionary perspective. The idea of a quick and effective "magic bullet" must be challenged and the conditions explained based on sound scientific data. The natural environment is an active web of complex interactions that react, sometimes in unexpected ways, to the "treatments" (insecticides and parasiticides) applied to it. Our hope is that the studies described here will shed light on the ecology (e.g., feeding habits, breeding sites, and nictameral cycles) of the species and will be a useful contribution to the clarification of taxonomic, systematic and vectorial identification. As a whole, they will contribute to the design, implementation and establishment of precise and well-founded control measures, the cost-benefit of which can be measured in ecological and socioeconomic terms and, above all, guarantee time-space sustainability. Finally, we hope that this review will, in and of itself, encourage the study of the bionomy of the *Anopheles* in Colombia.

#### ACKNOWLEDGEMENTS

To the Biology Department of the Universidad del Valle and the Instituto de Inmunología del Valle, for the time assigned to JML, RG and YAS for this review, to Dr R Dillon, for a revision of a preliminary version, and to the anonymous evaluators, who highly enriched the quality of the review with their comments and recommendations.

#### REFERENCES

- Arévalo-Herrera M, Solarte Y, Rocha L, Alvarez D, Beier JC, Herrera S 2011. Characterization of *Plasmodium vivax* transmission-blocking activity in low to moderate malaria transmission settings of the Colombian Pacific coast. *Am J Trop Med Hyg* 84 (Suppl. 2): 71-77.
- Arredondo-Jiménez JI, Bown DN, Rodríguez MH, Loyola EG 1995. Control of *Anopheles albimanus* mosquitos in southern Mexico by spraying their preferred indoor resting sites. *Bull WHO* 73: 329-337.
- Astaiza R, Murillo C, Fajardo P 1988. Biología de *Anopheles (Kerteszia) neivai* H., D. & K., 1913 (Diptera: Culicidae) en la Costa Pacífica de Colombia. II. Fluctuación de la población adulta. *Rev Saude Publica* 22: 101-108.
- Bates M 1943. Mosquitoes as vectors of *Dermatobia* in eastern Colombia. *Entomol Soc Am Ann* 36: 21-24.
- Bates M 1944. Observations on the distribution of diurnal mosquitoes in a tropical forest. *Ecol* 25: 159-170.
- Bejarano EE 2003. Occurrence of the malaria vector *Anopheles albimanus* Wiedemann (Diptera: Culicidae) in Isla Fuerte, Colombia. *Neotrop Entomol* 32: 517-518.
- Berti J, González J, Vanegas C, Guzmán H, Amarista J 1998. Fluctuaciones estacionales de la densidad larvaria de *Anopheles pseudopunctipennis* Theobald 1901 (Diptera: Culicidae) en dos ríos de Santa Fé, estado Sucre, Venezuela. *Bol Entomol Venez* 13: 1-15.
- Beyrer C, Suwanvanichkij V, Mullany LC, Richards AK, Franck N, Samuels A, Lee TJ 2006. Responding to AIDS, tuberculosis, malaria and emerging infectious diseases in Burma: dilemmas of policy and practice. *PLoS Med* 103: 393.
- Bharti AR, Chuquiyaury R, Brouwer KC, Stancil J, Lin J, Llanos-Cuentas A, Vinetz JM 2006. Experimental infection of the neotropical malaria vector *Anopheles darlingi* by human patient-derived *Plasmodium vivax* in the Peruvian Amazon. *Am J Trop Med Hyg* 75: 610-616.
- Branquinho MS, Lagos CB, Rocha RM, Natal D, Barata JM, Cochrane AH, Nardin E, Nussenzweig R, Kloetzel JK 1993. Anophelines in the state of Acre, Brazil, infected with *Plasmodium falciparum*, *P. vivax*, the variant *P. vivax* VK247 and *P. malariae*. *Trans Royal Soc Trop Med Hyg* 87: 391-394.
- Brochero H, Li C, Wilkerson R, Conn JE, Ruiz-Garcia M 2010. Genetic structure of *Anopheles (Nyssorhynchus) marajoara* (Diptera: Culicidae) in Colombia. *Am J Trop Med Hyg* 83: 585-595.
- Brochero H, Pareja PX, Ortiz G, Olano VA 2006. Sitios de cría y actividad de picadura de especies de *Anopheles* en el municipio de Cimitarra, Santander, Colombia. *Biomedica* 26: 269-277.
- Brochero H, Quiñones ML 2008. Retos de la entomología médica para la vigilancia en salud pública en Colombia: reflexión para el caso de malaria. *Biomedica* 28: 18-24.
- Brochero HL, Rey G, Buitrago LS, Olano VA 2005. Biting activity and breeding sites of *Anopheles* species in the municipality Villaviciencio, Meta, Colombia. *J Amer Mosq Control Assoc* 21: 182-186.
- Calado DC, Foster PG, Bergo ES, Santos CL, Galardo AK, Sallum MA 2008. Resurrection of *Anopheles goeldii* from synonymy with *Anopheles nuneztovari* (Diptera, Culicidae) and a new record for *Anopheles dunhami* in the Brazilian Amazon. *Mem Inst Oswaldo Cruz* 103: 791-799.
- Calderón G, Fernández R, Valle J 1995. Especies de la fauna anofelina, su distribución y algunas consideraciones sobre su abundancia e infectividad en el Perú. *Rev Peruana Epidemiol* 8: 5-23.
- Camargo LM, dal Colletto GM, Ferreira MU, Gurgel SM, Escobar AL, Marquez A, Krieger H, Canargo EP, da Silva LH 1996. Hy-

- poendemic malaria in Rondônia (Brazil, western Amazon Region): seasonal variation and risk groups in an urban locality. *Am J Trop Med Hyg* 55: 32-38.
- Carmona-Fonseca J 2003. La malaria en Colombia, Antioquia y las zonas de Urabá y Bajo Cauca. Parte 1. *Iatreia* 16: 299-317.
- Carmona-Fonseca J 2004. La malaria en Colombia, Antioquia y las zonas de Urabá y Bajo Cauca. Parte 2. *Iatreia* 17: 34-53.
- Carvajal H, Arevalo-Herrera M, Quintero J, Alzate A, Herrera S 1989. *Anopheles neivai*: a vector of malaria in the Pacific lowlands of Colombia. *Trans Roy Soc Trop Med Hyg* 83: 609-612.
- Charlwood JD 1996. Biological variation in *Anopheles darlingi* Root. *Mem Inst Oswaldo Cruz* 91: 391-398.
- Charlwood JD, Wilkes TJ 1979. Studies of the age composition of samples of *Anopheles darlingi*, Root (Diptera: Culicidae) in Brazil. *Bull Entomol Res* 69: 337-342.
- Conn J 1990. A genetic study of the malaria vector *Anopheles nuneztovari* from western Venezuela. *J Am Mosq Control Assoc* 6: 400-405.
- Conn J, Puertas YR, Seawright JA 1993. A new cytotype of *Anopheles nuneztovari* from western Venezuela and Colombia. *J Am Mosq Control Assoc* 9: 294-301.
- Conn JE, Mitchell SE, Cockburn AF 1998. Mitochondrial DNA analysis of the neotropical malaria vector *Anopheles nuneztovari*. *Gen Res* 41: 313-327.
- Conn JE, Wilkerson RC, Segura MNO, de Souza RTL, Chlichting CD, Wirtz RA, Póvoa MM 2002. Emergence of a new neotropical malaria vector facilitated by human migration and changes in land use. *Am J Trop Med Hyg* 66: 18-22.
- Curry D 1925. Some observations mosquito control in the canal zone, with special reference to the genus *Anopheles*. *Am J Trop Med* 5: 1-16.
- Dalla Bona AC, Navarro-Silva MA 2010. Physiological age and longevity of *Anopheles (Kerteszia) cruzii* Dyar & Knab (Diptera: Culicidae) in the Atlantic Forest of Southern Brazil. *Neotrop Entomol* 39: 282-288.
- Dantur MJ, Claps GL, Santana M, Zaidenber, Almirón WR 2010. Abundance patterns of *Anopheles pseudopunctipennis* and *Anopheles argyritarsis* in northwestern Argentina. *Acta Tropica* 115: 234-241.
- Dantur MJ, Zaidenber M, Almirón W 2005. Distribución espacial de *Anopheles pseudopunctipennis* en las Yungas de Salta, Argentina. *Rev Saude Publica* 39: 565-570.
- de Arruda M, Carvalho MB, Nussenzweig RS, Ferreira AW, Cochrane AH 1986. Potential vectors of malaria and their different susceptibility to *Plasmodium falciparum* and *Plasmodium vivax* in northern Brazil identified by immunoassay. *Am J Trop Med Hyg* 35: 873-881.
- Dieguez L, Rodríguez R, Atienzar E, Manso O, Basulto P, Góngora N 2002. Observaciones entomológicas en un brote de paludismo durante la etapa de vigilancia intensiva en Albaisa, Camagüey. *Rev Cub Med Trop* 54: 118-126.
- Donnelly MJ, Simard F, Lehmann T 2002. Evolutionary studies of malaria vectors. *Trends Parasitol* 18: 75-80.
- Elliot R 1972. The influence of vector behavior on malaria transmission. *Am J Trop Med Hyg* 21: 755-763.
- Enserink M 2002. Lab vs field: the case for studying real-life bugs. *Science* 298: 92-93.
- Escobar J, González R, Quinones ML, Wilkerson R, Harrison B 2010. Presence of *Anopheles (Kerteszia) pholidotus* in a malaria focus in Colombia. In G Clark, Rubio-Palis Y, Mosquito vector biology and control in Latin America. A 20th symposium. *J Am Mosq Cont Assoc* 26: 306-320.
- Fajardo P, Alzate A 1987. *Anopheles nuneztovari* como vector de la malaria en el Bajo Calima, Buenaventura. *Colom. Medica* 18: 14-18.
- Fajardo P, Barreto P, Suárez MF 1983. Anofelinos de Córdoba (Buenaventura). *Colom Medica* 14: 99-103.
- Faran ME 1980. Mosquito studies (Diptera: Culicidae). XXIV. A revision of the *Albimanus* section of the subgenus *Nyssorhynchus* of *Anopheles*. *Cont Am Entomol Inst* 15: 1-215.
- Fernandez-Salas I, Roberts DR, Rodríguez MH, Marina-Fernandez CF 1994. Bionomics of larval populations of *Anopheles pseudopunctipennis* in the Tapachula foothills area, southern Mexico. *J Am Mosq Control Assoc* 10: 477-486.
- Fleming G 1986. *Biología y ecología de los vectores de la malaria en las Américas*, PAHO/WHO, PNSP-86-72, Washington, 54 pp.
- Flores-Mendoza C, Fernandez R, Escobedo-Vargas KS, Vela-Perez Q, Schoeler GB 2004. Natural *Plasmodium* infections in *Anopheles darlingi* and *Anopheles benarrochi* (Diptera: Culicidae) from eastern Peru. *J Med Entomol* 41: 489-494.
- Foley BH, Weitzman AL, Miller SE, Faran ME, Rueda LM, Wilkerson RC 2008. The value of georeferenced collection records for predicting patterns of mosquitoes species richness and endemism in the neotropics. *Ecol Entomol* 33: 12-23.
- Fonseca-González I, Cárdenas R, Gómez W, Santacoloma L, Brochero H, Ocampo C, Salazar M, Mcallister J, Brogdon W, Quiñones M 2010. Diagnostic doses for monitoring insecticide resistance of malaria vectors in Colombia. *Rev Col Entomol* 36: 54-61.
- Footo RH, Cook DR 1959. *Mosquitoes of medical importance*, vol. 152, Agriculture Research Service/US Department of Agriculture, Washington, 158 pp.
- Forattini OP 1987. Comportamento exófilo de *Anopheles darlingi* Root em região meridional do Brasil. *Rev Saude Publica* 21: 291-304.
- Frederickson EC 1993. *Bionomics and control of Anopheles albimanus*, Pan-American Health Organization, Washington, 76 pp.
- Freitas-Sibajev MGR, Conn JE, Mitchell S, Cockburn A, Seawright JA, Momen H 1995. Mitochondrial DNA and morphological analyses of *Anopheles darlingi* populations from Brazil. *Mosq System* 27: 79-85.
- Fritz GN, Conn J, Cockburn A, Seawright J 1994. Sequence analysis of the ribosomal DNA internal transcribed spacer-2 from populations of *Anopheles nuneztovari* (Diptera: Culicidae). *Mol Biol Evol* 11: 406-416.
- Fritz GN, Engman SRR, Wilkerson RC 2004. Identification of four vectors of human *Plasmodium* spp by multiplex PCR: *Anopheles rangeli*, *An. strodei*, *An. triannulatus*, and *An. trinkae* (Diptera: Culicidae: *Nyssorhynchus*). *J Med Entomol* 41: 1111-1115.
- Gabaldón A 1981. *Anopheles nuneztovari*: importante vector y agente de malaria refractaria en Venezuela *Bol Dir Mal San Amb* 21: 1-27.
- Gabaldón A 1983. Malaria eradication in Venezuela: doctrine, practice and achievements after twenty years. *Am J Trop Med Hyg* 32: 203-211.
- Galardo AKR, Arruda M, Couto AARD, Wirtz R, Lounibos LP, Zimmerman RH 2007. Malaria vector incrimination in three rural riverine villages in the Brazilian Amazon. *Am J Trop Med Hyg* 76: 461-469.
- Galardo AKR, Zimmerman RH, Lounibos LP, Young LJ, Galardo CD, de Arruda M, Couto AARD 2009. Seasonal abundance of anopheline mosquitoes and their association with rainfall and malaria along the Matapi River, Amapá, Brazil. *Med Vet Entomol* 23: 335-349.
- Gast A 1943. Biología y distribución geográfica de los anofelinos en Colombia. *Rec Fac Med* 12: 53-103.

- González JM, Olano V, Vergara J, Arévalo-Herrera M, Carrasquilla G, Herrera S, López JA 1997. Unstable, low-level transmission of malaria on the Colombian Pacific coast. *Ann Trop Med Parasitol* 91: 349-358.
- González R, Carrejo N 2007. *Introducción al estudio taxonómico de Anopheles de Colombia. Claves y notas de distribución*, Universidad del Valle, Cali, 237 pp.
- González R, Carrejo N 2009. *Introducción al estudio taxonómico de Anopheles de Colombia. Claves y notas de distribución*, Segunda edición, Programa editorial Universidad del Valle, Cali, Colombia, 260 pp.
- González R, Carrejo N, Wilkerson RC, Alarcon J, Alarcon-Ormasa J, Ruiz F, Bhatia R, Loaiza J, Linton YM 2010. Confirmation of *Anopheles (Anopheles) calderoni* Wilkerson, 1991 (Diptera: Culicidae) in Colombia and Ecuador through molecular and morphological correlation with topotypic material. *Mem Inst Oswaldo Cruz* 105: 1001-1009.
- González R, Martínez LM 2006. Nuevo registro de distribución altitudinal de *Anopheles albimanus* Wiedemann (Diptera: Culicidae). *Bol Mus Entomol Univ Valle* 7: 19-23.
- González R, Wilkerson R, Suárez MF, García F, Gallego G, Cárdenas H, Posso CE, Duque MC 2007. A population genetics study of *Anopheles darlingi* (Diptera: Culicidae) from Colombia based on random amplified polymorphic DNA-polymerase chain reaction and amplified fragment length polymorphism markers. *Mem Inst Oswaldo Cruz* 102: 255-262.
- Gutiérrez LA, Gómez GF, González JJ, Castro MI, Luckhart S, Conn JE, Correa MM 2010a. Microgeographic genetic variation of the malaria vector *Anopheles darlingi* (Diptera: Culicidae) from Córdoba and Antioquia, Colombia. *Am J Trop Med Hyg* 83: 38-47.
- Gutiérrez LA, González JJ, Gómez GF, Castro MI, Rosero DA, Luckhart S, Conn JE, Correa MM 2009. Species composition and natural infectivity of anthropophilic *Anopheles* (Diptera: Culicidae) in the states of Córdoba and Antioquia, Northwestern Colombia. *Mem Inst Oswaldo Cruz* 104: 1117-1124.
- Gutiérrez LA, Naranjo N, Jaramillo LM, Muskus C, Luckhart S, Conn JE, Correa MM 2008. Natural infectivity of *Anopheles* species from the Pacific and Atlantic regions of Colombia. *Acta Trop* 107: 99-105.
- Gutiérrez LA, Orrego LM, Gómez GF, López A, Luckhart S, Conn JE, Correa MM 2010b. A new mtDNA COI gene lineage closely related to *Anopheles janconnae* of the Albitarsis complex in the Caribbean region of Colombia. *Mem Inst Oswaldo Cruz* 105: 1019-1025.
- Hayes J, Calderón G, Falcon R, Zambrano V 1987. Newly incriminated *Anopheles* vectors of human malaria parasites in Junin Department, Peru. *J Am Mosq Control Assoc* 33: 418-422.
- Herrera S, Suárez MF, Sánchez GI 1987. Uso de la técnica inmunoradiométrica (IRMA) en *Anopheles* de Colombia para la identificación de esporozoítos de *Plasmodium*. *Colom Med* 18: 2-6.
- Hoffman CH 1932. On *Anopheles pseudopunctipennis* and its relation to malaria in Mexico. *South Med J* 25: 523-528.
- Hribar LJ 1994. Geographical variation of male genitalia of *Anopheles nuneztovari* Gabaldón. *Mosq System* 26: 132-144.
- Hudson JE 1984. *Anopheles darlingi* Root (Diptera: Culicidae) in the Suriname rain forest. *Bull Entomol Res* 74: 129-142.
- Hurtado JC, Solarte Y 1986. *Interrelación entre la vegetación y las poblaciones de anofelinos presentes en la parte baja del Rio Naya, Buenaventura, Colombia*, Thesis of Biology, Universidad del Valle, Cali, 189 pp.
- Keppler WJJ, Kitzmiller JB, Rabbani MG 1973. The salivary gland chromosomes of *Anopheles albimanus*. *Mosq News* 33: 42-49.
- Knight KL, Stone A 1977. *A catalog of mosquitoes of the world (Diptera, Culicidae)*, vol. 6, 2nd ed., Thomas Say Foundation, Baltimore, p. xii.
- Krzywinski J, Besansky NJ 2003. Molecular systematics of *Anopheles*: from subgenera to subpopulations. *Ann Rev Entomol* 48: 111-139.
- Lee VH, Sanmartin C 1967. Isolations of Guaroa virus from *Anopheles (Kerteszia) neivai* in the Pacific lowlands of Colombia. *Am J Trop Med Hyg* 16: 778-781.
- Levi-Castillo 1949. *Atlas de los anofelinos Sudamericanos*, Soc. Filantrop. Guayas, Guayaquil, 207 pp.
- Linley JR, Lounibos LP, Conn J, Duzak D, Nishimura N 1996. A description and morphometric comparison of eggs from eight geographic populations of the South American malaria vector *Anopheles (Nyssorhynchus) nuneztovari* (Diptera: Culicidae). *J Am Mosq Control Assoc* 12: 275-292.
- Linthicum KJ 1988. A revision of the Argyritarsis section of the subgenus *Nyssorhynchus* of *Anopheles*. *Mosq Syst* 20: 1-271.
- Loaiza JR, Bermingham E, Scott ME, Rovira JR, Conn JE 2008. Species composition and distribution of adult *Anopheles* (Diptera: Culicidae) in Panama. *J Med Entomol* 45: 841-851.
- Loaiza J, Scott M, Bermingham E, Rovira J, Sanjur O, Conn JE 2009. *Anopheles darlingi* (Diptera: Culicidae) in Panama. *Am J Trop Med Hyg* 81: 23-26.
- Loaiza JR, Scott ME, Bermingham E, Sanjur OI, Wilkerson R, Rovira J, Gutiérrez LA, Correa MM, Grijalva MJ, Birnberg L, Bickersmith S, Conn JE 2010. Late Pleistocene environmental changes lead to unstable demography and population divergence of *Anopheles albimanus* in the northern Neotropics. *Mol Phylogenet Evol* 57: 1341-1346.
- López D, González R 1994. Análisis de la dispersión y la abundancia de los estadios larvales de *Anopheles nuneztovari* (Gabaldón) en estanques piscícolas del municipio de Buenaventura Colombia. *Bol Mus Entomol Univ del Valle* 2: 73-84.
- Lourenço-de-Oliveira R, Guimarães AE, Arlé M, Silva TF, Castro MG, Motta MA, Deane LM 1989. Anopheline species, of their habits and relation malaria in endemic areas of Rondonia state, Amazon Region of Brazil. *Mem Inst Oswaldo Cruz* 84: 501-514.
- Lucumí DM, Restrepo CX, González R, Salas C 2009. Actividad de picadura peridomiciliar de *Anopheles (Anopheles) calderoni* Wilkerson, 1991 (Diptera: Culicidae) en dos localidades del Valle del Cauca. In *Memorias XIV Congreso Colombiano de Parasitología y Medicina Tropical*. *Biomedica* 29: 220.
- Magris M, Rubio-Palis Y, Menares C, Villegas L 2007. Vector demographics and malaria transmission in the Upper Orinoco River, Southern Venezuela. *Mem Inst Oswaldo Cruz* 102: 303-311.
- Manguin S, Roberts DR, Andre RG, Rejmánková E, Hakre S 1996. Characterization of *Anopheles darlingi* (Diptera: Culicidae) larval habitats in Belize, Central America. *J Med Entomol* 33: 205-211.
- Manguin S, Roberts DR, Peyton EL, Fernandez-Salas I, Barreto M, Fernandez LR, Elgueta SR, Martinez GR, Rodríguez MR 1995. Biochemical systematics and population genetic structure of *Anopheles pseudopunctipennis*, vector of malaria in Central and South America. *Am J Trop Med Hyg* 33: 362-377.
- Manguin S, Wilkerson RC, Conn JE, Rubio-Palis Y, Danoff-Burg JA, Roberts DR 1999. Population structure of the primary malaria vector in South America, *Anopheles darlingi*, using isozyme, random amplified polymorphic DNA, internal transcribed spacer-2, and morphologic markers. *Am J Trop Med Hyg* 60: 364-376.
- Marrelli MT, Malafrente RS, Flores-Mendoza C, Lourenço-de-Oliveira R, Kloetzel JK, Marinotti O 1999. Sequence analysis of the second internal transcribed spacer (ITS2) of ribosomal DNA in *Anopheles oswaldoi* (Diptera: Culicidae). *J Med Entomol* 36: 679-684.

- Marten GG, Suarez MF, Astaiza R 1996. An ecological survey of *Anopheles albimanus* larval habitats in Colombia. *J Vector Ecol* 21: 122-131.
- Mekuria Y, Granados R, Tidwell MA, Williams DC, Wirtz RA, Roberts DR 1991. Malaria transmission potential by *Anopheles* mosquitoes of Dajabon, Dominican Republic. *J Am Mosq Control Assoc* 7: 456-461.
- Méndez F, Carrasquilla G 1995. Epidemiología de la malaria en el área urbana de Buenaventura: análisis de la ocurrencia en el periodo 1987-1993. *Colom Medica* 26: 77-85.
- Mirabello L, Conn JE 2008. Population analysis using the nuclear white gene detects Pliocene/Pleistocene lineage divergence within *Anopheles nuneztovari* in South America. *Med Vet Entomol* 22: 109-119.
- Mirabello L, Vineis JH, Yanoviak SP, Scarpassa VM, Povoia MM, Padilla N, Achee NL, Conn JE 2008. Microsatellite data suggest significant population structure and differentiation within the malaria vector *Anopheles darlingi* in Central and South America. *BMC Ecol* 8: 3.
- Molina-Cruz A, Demérida AMP, Mills K, Rodríguez F, Schoua C, Yurrita MM, Molina E, Palmieri M, Black IV WC 2004. Gene flow among *Anopheles albimanus* populations in Central America, South America, and the Caribbean assessed by microsatellites and mitochondrial DNA. *Am J Trop Med Hyg* 71: 350-359.
- Moonen B, Barrett S, Tulloch J, Jamison DT 2009. Making the decision. In RGA Feachem, AA Phillips, GA Targett, *Shrinking the malaria map. A prospectus on malaria elimination*, University of California, San Francisco, 189 pp.
- Moreno J, Rubio-Palis Y, Pérez E, Sánchez V, Páez E 2007. Abundance, biting behaviour and parous rate of anopheline mosquito species in relation to malaria incidence in gold-mining areas of southern Venezuela. *Med Veter Entomol* 21: 339-349.
- Moreno JE, Rubio-Palis Y, Paez E, Perez E, Sanchez V, Vaccari E 2005. *Anopheles (Anopheles) neomaculipalpus*: a new malaria vector in the Amazon Basin? *Med Veter Entomol* 19: 329-332.
- Moreno M, Marinotti O, Krzywinski J, Tadei WP, James AA, Achee NL, Conn JE 2010. Complete mtDNA genomes of *Anopheles darlingi* and an approach to anopheline divergence time. *Malar J* 9: 127.
- Muñoz LC, Parra R 1984. *Contribución al conocimiento de las especies de anofelinos presentes en el Bajo Calima, Cali*, Biology Thesis, Universidad del Valle, Cali, 134 pp.
- Murillo C, Astaiza R, Fajardo P 1988a. Biología de *Anopheles (Kerteszia) neivai* H., D. & K., 1913 (Diptera: Culicidae) en la costa Pacífica de Colombia. I. Fluctuación de la población larval y características de sus criaderos. *Rev Saude Publica* 22: 94-100.
- Murillo C, Astaiza R, Fajardo P 1988b. Biología de *Anopheles (Kerteszia) neivai* H., D. & K., 1913 (Diptera: Culicidae) en la costa Pacífica de Colombia. III. Medidas de luminosidad y el comportamiento de picadura. *Rev Saude Publica* 22: 109-112.
- Ocampo CB, Brogdon WG, Orrego CM, Toro G, Montoya J 2000. Insecticide susceptibility in *Anopheles pseudopunctipennis* from Colombia: comparison between bioassays and biochemical assays. *J Am Mosq Control Assoc* 16: 331-338.
- Ochoa J, Osorio L 2006. Epidemiología de malaria urbana en Quibdó, Chocó. *Biomedica* 26: 278-285.
- Ogata K, Ikeda T, Umino T, Bocanegra RZ 1992. Observation of biting and resting behavior of *Anopheles albimanus* in Guatemala. *Jpn J Sanit Zool* 43: 47-57.
- Olah CA, Montoya J 1985. *Variación estacional en la actividad de picadura al hombre por anofelinos en Juanchaco y Ladrilleros, Buenaventura*, Thesis of Biology, Universidad del Valle, Cali, 121 pp.
- Olano V, Carrasquilla G, Méndez F 1997. Transmisión de la malaria urbana en Buenaventura, Colombia: aspectos entomológicos. *Rev Panam Salud Publica* 1: 287-294.
- Olano VA, Brochero HL, Saenz R, Quiñones ML, Molina J 2001. Mapas preliminares de la distribución de especies de *Anopheles* vectores de malaria en Colombia. *Biomedica* 21: 402-408.
- Oliveira-Ferreira J, de Oliveira LR, Teva A, Deane LM, Daniel-Ribeiro CT 1990. Natural malaria infections in anophelines in Rondônia state, Brazilian Amazon. *Am J Trop Med Hyg* 43: 6-10.
- Oliveira-Ferreira J, Lourenço-de-Oliveira R, Deane LM, Daniel-Ribeiro CT 1992. Feeding preference of *Anopheles darlingi* in malaria endemic areas of Rondônia state - northwestern Brazil. *Mem Inst Oswaldo Cruz* 87: 601-602.
- OPS 1996. Biology and ecology of *Anopheles albimanus* Wiedeman in Central America. *Bol Ofic San OPS* 121: 189-220.
- Pajot F, Le Pont F, Molez J, Degallier N 1977. Agressivité d' *Anopheles (Nyssorhynchus) darlingi* Root, 1926 (Diptera: Culicidae) en Guyane Française. *Entomol Medicale Parasitol* 15: 15-22.
- Panday RS 1977. *Anopheles nuneztovari* and malaria transmission in Suriman. *Mosq News* 37: 728-737.
- Parra-Henao G, Alarcón-Pineda EP 2008. Observaciones sobre la biología de *Anopheles* spp. (Diptera: Culicidae) en el municipio Valencia, departamento Córdoba, Colombia. *Bol Malaria Sal Amb* 48: 95-98.
- Pedro M, Sallum MAM 2009. Spatial expansion and population structure of the neotropical malaria vector, *Anopheles darlingi* (Diptera: Culicidae). *Biol J Linn Soc* 97: 854-866.
- Porras A, de la Hoz F, Velandia MP, Olano VA, Cáceres DC, Rojas LJ, Murillo ZP, Mendoza M, García M, Nicholls S, Montoya R, Pinzón E, Bruzón L, Burbano ME, Mendoza E, Riaño U 2001. Epidemia de malaria en La Guajira, enero a noviembre del 2000: balance final. *IQEN* 6: 205-214.
- Posso CE, González R, Cárdenas H, Gallego G, Duque MC, Suarez MF 2003. Random amplified polymorphic DNA analysis of *Anopheles nuneztovari* (Diptera: Culicidae) from western and northeastern Colombia. *Mem Inst Oswaldo Cruz* 98: 469-476.
- Poveda G, Rojas W, Quiñones ML, Velez IV, Mantilla RI, Ruiz D, Zuluaga JS, Rua GL 2001. Coupling between Annual and ENSO Timescales in the Malaria - Climate Association in Colombia. *Environm Health Persp* 109: 489-493.
- Póvoa MM, Wirtz RA, Lacerda RNL, Miles MA, Warhust D 2001. Malaria vectors in the municipality of Serra do Navio, state of Amapá, Amazon Region, Brazil. *Mem Inst Oswaldo Cruz* 96: 179-184.
- Quiñones ML, Suarez MF, Fleming G 1987. Distribución y bionomía de los anofelinos de la Costa Pacífica de Colombia. *Colom Medica* 18: 19-24.
- Quiñones ML, Suárez MF, Rodríguez A, Fleming G, Galvis LE 1984. Comportamiento de *Anopheles (Kerteszia) lepidotus* Zavortink 1973 y su incriminación como posible vector de la malaria en el departamento del Tolima, Colombia. *Biomedica* 4: 5-13.
- Quiñones ML, Villarreal LI, Suarez MF 1992. Distribution and biting behaviour of *Anopheles* species in Casanare, Colombia. Symposium summaries. In GL Clark, MF Suarez (eds.). Mosquito vector control and biology in Latin America. A second symposium. *J Am Mosq Control Assoc* 8: 305-306.
- Quiñones ML, Harbach RE, Calle DA, Ruiz F, Erazo HF, Linton Y-M 2001. Variante morfológica de adultos hembras de *Anopheles benarrochi* (Diptera: Culicidae) en Putumayo, Colombia. *Biomedica* 21: 351-359.
- Quiñones ML, Ruiz F, Calle DA, Harbach RE, Erazo HF, Linton YM 2006. Incrimination of *Anopheles (Nyssorhynchus) rangeli* and *An. (Nys.) oswaldoi* as natural vectors of *Plasmodium vivax* in Southern Colombia. *Mem Inst Oswaldo Cruz* 101: 617-623.

- Quiñones ML, Suarez MF 1990. Indoor resting heights of some anophelines in Colombia. *J Am Mosq Control Assoc* 6: 602-604.
- Rachou RG 1958. Anofelinos no Brasil: comportamento das espécies vetoras de malária. *Rev Bras Malariol Doencas Trop* 10: 145-181.
- Ramos MF, Obando RG, Suárez MF, López D, Wilkerson R, Sallumm MA 2008. Morphological analysis of three populations of *Anopheles (Nyssorhynchus) nuneztovari* Gabaldón (Diptera: Culicidae) from Colombia. *Mem Inst Oswaldo Cruz* 103: 85-92.
- RBM - The Roll Back Malaria Partnership 2008. The Global Malaria Action Plan. For a malaria-free world. Available from: rbm.who.int/gmap/gmap.pdf.
- Rejmánková E, Savage H, Rejmanek M, Arredondo-Jiménez J, Roberts R 1991. Multivariate analysis of relationships between habitats, environmental factors and occurrence of anopheline mosquito larvae *Anopheles albimanus* and *A. pseudopunctipennis* in Chiapas, Mexico. *J Appl Ecol* 28: 827-841.
- Rey H, Rengifo S 1950. *Anopheles (N.) nuneztovari* infectado en la naturaleza con *Plasmodium* sp. *Rev Acad Colomb Cien Exac Fis Nat* 7: 534-538.
- Roberts RD, Alecrim WD, Tavares AM, Radke MG 1987. The house frequenting, host seeking and resting behavior of *Anopheles darlingi* in southeastern Amazonas, Brazil. *J Am Mosq Control Assoc* 3: 433-441.
- Rodríguez M, Pérez L, Caicedo JC, Prieto G, Arroyo JA, Kaur H, Suárez-Mutis M, De La Lioz F, Lines J, Alexander N 2009. Composition and biting activity of *Anopheles* (Diptera: Culicidae) in the Amazon Region of Colombia. *J Med Entomol* 46: 307-315.
- Rojas W, Botero S, Garcia HI 2001. An integrated malaria control program with community participation on the Pacific coast of Colombia. *Cad Saude Publ* 17 (Suppl): 103-113.
- Rozendaal JA 1989. Biting and resting behaviour of *Anopheles darlingi* in the Suriname rainforest. *J Am Mosq Control Assoc* 5: 351-358.
- Rubio-Palis Y 2000. *Anopheles (Nyssorhynchus)* de Venezuela: taxonomía, bionomía, ecología e importancia médica. In *Escuela Malariología y Saneamiento Ambiental*, Maracay, Caracas, p. 120.
- Rubio-Palis Y, Curtis CF, González C, Wirtz RA 1994. Host choice of anopheline mosquitoes in a malaria endemic area of western Venezuela. *Med Vet Entomol* 8: 275-280.
- Rubio-Palis Y, Menare C, Quinto A, Magris M, Amarista M 2005. Caracterización de criaderos de anofelinos (Diptera: Culicidae) vectores de malaria del Alto Orinoco, Amazonas, Venezuela. *Entomotropica* 20: 29-38.
- Rubio-Palis Y, Wirtz RA, Curtis CF 1992. Malaria entomological inoculation rates in western Venezuela. *Acta Trop* 52: 167-174.
- Rubio-Palis Y, Zimmerman RH 1997. Ecoregional classification of malaria vectors in the neotropics *J Med Entomol* 34: 499-510.
- Rueda LM, Peyton EL, Manguin S 2004. *Anopheles (Anopheles) pseudopunctipennis* Theobald (Diptera: Culicidae): neotype designation and description. *J Med Entomol* 41: 12-22.
- Ruiz F, Linton YM, Ponsonby DJ, Conn JE, Herrera M, Quiñones ML, Vélez ID, Wilkerson RC 2010. Molecular comparison of topotypic specimens confirms *Anopheles (Nyssorhynchus) dunhami* Causey (Diptera: Culicidae) in the Colombian Amazon. *Mem Inst Oswaldo Cruz* 105: 899-903.
- Ruiz F, Quiñones ML, Erazo HF, Calle DA, Alzate JF, Linton YM 2005. Molecular differentiation of *Anopheles (Nyssorhynchus) benarrochi* and *An. (N.) oswaldoi* from southern Colombia. *Mem Inst Oswaldo Cruz* 100: 155-160.
- Savage H, Rejmánková E, Arredondo J, Roberts D, Rodríguez M 1990. Limnological and botanical characterization of larval habitats for two primary malarial vectors, *Anopheles albimanus* and *Anopheles pseudopunctipennis* in coastal areas of Chiapas State, México. *J Am Med Assoc* 6: 612-620.
- Scarpassa VM, Tadei WP 2000. Enzymatic analysis in *Anopheles nuneztovari* Gabaldón (Diptera, Culicidae). *Braz J Biol* 60: 539-550.
- Scarpassa VM, Tadei WP, Suarez MF 1999. Population structure and genetic divergence in *Anopheles nuneztovari* (Diptera: Culicidae) from Brazil and Colombia. *Am J Trop Med Hyg* 60: 1010-1018.
- Scorza JV, Rodríguez E, Moreno G 1981. Ecología de *Anopheles nuneztovari* Gabaldón, 1940 en el occidente de Venezuela. *Bol Dir Mal San Amb* 21: 1-27.
- Sevilla-Casas E 1993. Human mobility and malaria risk in the Naya river basin of Colombia. *Social Sci Med* 37: 1155-1167.
- Sierra DM, Velez IV, Linton YM 2004. Malaria vector *Anopheles (Nyssorhynchus) nuneztovari* comprises one genetic species in Colombia based on homogeneity of nuclear ITS2 rDNA. *J Med Entomol* 41: 302-307.
- Sinka ME, Rubio-Palis Y, Manguin S, Patil AP, Temperley WH, Gething PW, Van Boeckel T, Kabaria CW, Harbach RE, Hay SI 2010. The dominant *Anopheles* vectors of human malaria in the Americas: occurrence data, distribution maps and bionomic precises. *Parasit Vectors* 3: 72.
- Snow RW, Guerra CA, Mutheu JJ, Hay SI 2008. International funding for malaria control in relation to populations at risk of stable *Plasmodium falciparum* transmission. *PLoS Med* 5: e142.
- Solarte Y, González R, Hurtado JC, Alzate A 1994. Influencia de la vegetación en la presencia, distribución y abundancia de criaderos de tres especies de *Anopheles* (Dip: Culicidae) en la parte baja del Río Naya, costa Pacífica de Colombia. *Bol Mus Entomol Univ del Valle* 2: 55-72.
- Solarte Y, Hurtado C, Gonzalez R, Alexander B 1996. Man-biting activity of *Anopheles (Nyssorhynchus) albimanus* and *An. (Kerteszia) neivai* (Diptera: Culicidae) in the Pacific lowlands of Colombia. *Mem Inst Oswaldo Cruz* 91: 141-146.
- Suarez MF, Quiñones ML, Wirtz RA 1990. *Anopheles rangeli* - A suspected vector of *Plasmodium vivax* in southern Colombia. In *Proceedings of the 39th Annual Meeting of the American Society of Tropical Medicine and Hygiene*, New Orleans, p. 158.
- Tadei WP, Dutary-Thatcher BD 2000. Malaria vectors in the Brazilian Amazon: *Anopheles* of the subgenus *Nyssorhynchus*. *Rev Inst Med Trop Sao Paulo* 42: 87-94.
- Tadei WP, Thatcher BD, Santos JMM, Scarpassa VM, Rodríguez IB 1998. Ecologic observations on anopheline vectors of malaria in the Brazilian Amazon. *Am J Trop Med Hyg* 59: 325-335.
- Torres-Estrada JL, Meza-Alvarez RA, Cibrian-Tovar J, Rodríguez-López MH, Arredondo-Jimenez JI, Cruz-López L, Rojas-Leon JC 2005. Vegetation-derived cues for the selection of oviposition substrates by *Anopheles albimanus* under laboratory conditions. *J Am Mosq Control Assoc* 21: 344-349.
- Vargas L, Martinez-Palacios A 1955. Distribución de los anofelinos de México. *Rev Inst Salub Enf Trop* 15: 81-123.
- Vittor AY, Gilman RH, Tielsch J, Glass G, Shields T, Lozano WS, Pinedo-Cancino V, Patz JA 2006. The effect of deforestation on the human-biting rate of *Anopheles darlingi*, the primary vector of falciparum malaria in the Peruvian Amazon. *Am J Trop Med Hyg* 74: 3-11.
- WHO - World Health Organization 1960. A study on blood-feeding patterns of *Anopheles* mosquitoes through precipitin tests. *Bull WHO* 22: 685-720.
- WHO - World Health Organization 2004. Global strategic framework for integrated vector management, WHO, Geneva, p. 15.

- WHO - World Health Organization 2008. Malaria in the Americas: time series epidemiological data from 2000 to 2007, Washington DC: Pan American Health Organization, Regional Office for the Americas 2008. Available from: [paho.org/English/ad/dpc/cd/mal-reg-country-epi-data-2007.pdf](http://paho.org/English/ad/dpc/cd/mal-reg-country-epi-data-2007.pdf).
- WHO - World Health Organization 2010. World Malaria Report 2010. Available from: [who.int/malaria/world\\_malaria\\_report\\_2010/worldmaliareport2010.pdf](http://who.int/malaria/world_malaria_report_2010/worldmaliareport2010.pdf).
- Wilkerson RC 1990. Redescription of *Anopheles punctimacula* and *An. malefactor* (Diptera: Culicidae). *J Med Entomol* 27: 225-247.
- Wilkerson RC 1991. *Anopheles (Anopheles) calderoni* n. sp., a malaria vector of the Arribalzagia series from Peru (Diptera: Culicidae). *Mosq Syst* 23: 25-38.
- Wilkerson RC, Sallum MA, Forattini OP 1997. Redescription of *Anopheles (Anopheles) shannoni* Davis; a member of the *Arribalzagia* series from the Amazon Basin (Diptera Culicidae). *Proc Entomol Soc Wash* 99: 461-471.
- Zapata MA, Cienfuegos AV, Quiros OI, Quiñones ML, Luckhart S, Correa M 2007. Discrimination of seven *Anopheles* species from San Pedro de Urabá, Antioquia, Colombia, by polymerase chain reaction-restriction fragment length polymorphism analysis of its sequences. *Am J Trop Med Hyg* 77: 67-72.
- Zavortink TJ 1973. Mosquito studies (Diptera, Culicidae) XXIX. A review of the subgenus *Kerteszia* of *Anopheles*. *Contrib Am Entomol Inst* 9: 1-55.
- Zimmerman RH 1992. Ecology of malaria vectors in the Americas and future direction. *Mem Inst Oswaldo Cruz* 87 (Suppl. III): 371-383.
- Zimmerman RH, Galardo AKR, Lounibos LP, de Arruda M, Wirtz R 2006. Bloodmeal hosts of *Anopheles* species (Diptera: Culicidae) in a malaria-endemic area of the Brazilian Amazon. *J Med Entomol* 43: 947-956.